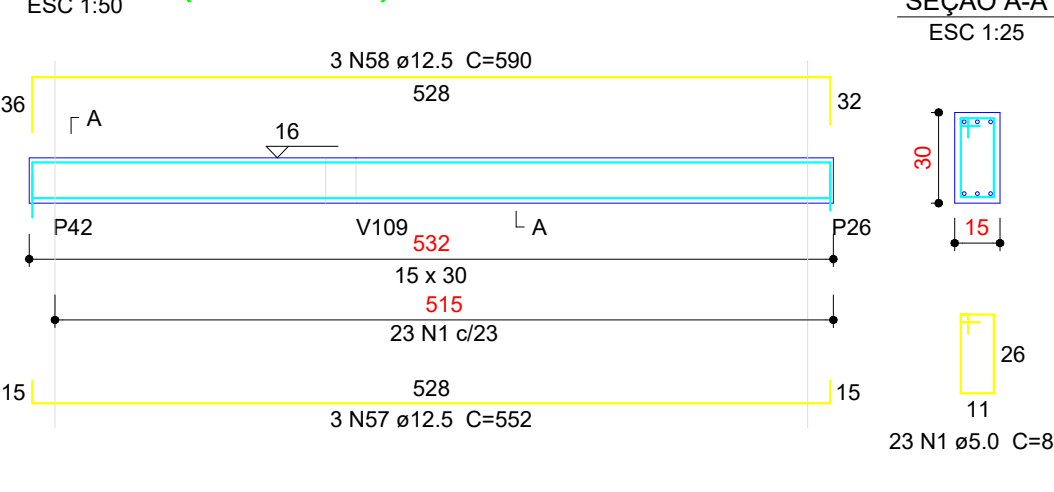
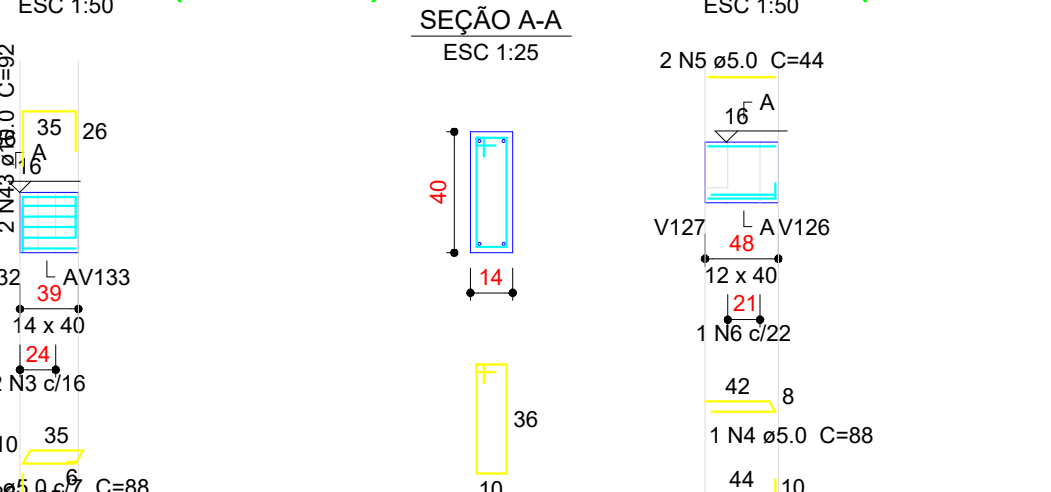


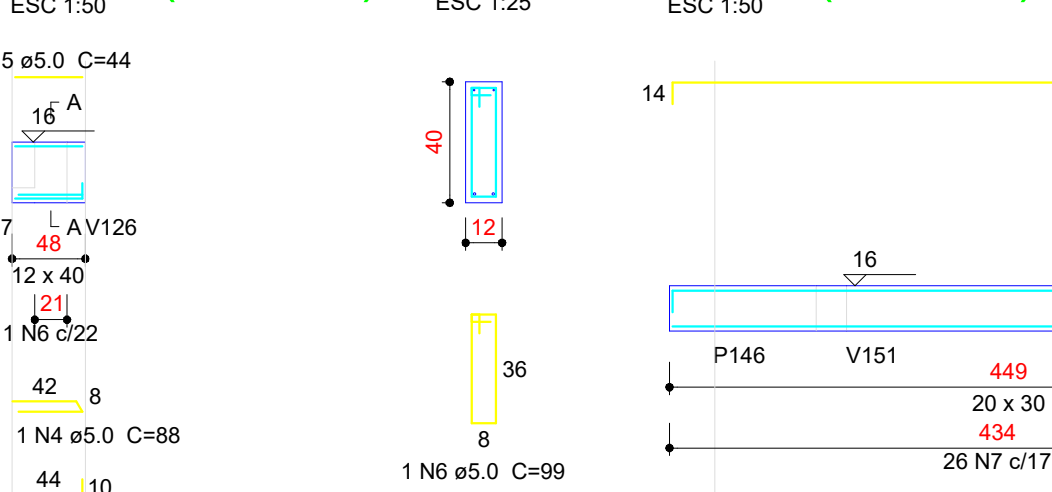
V193 (15 x 30)



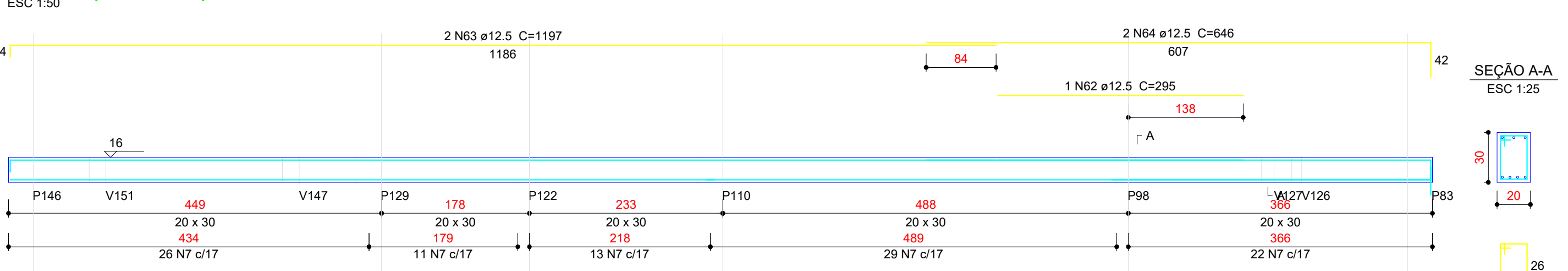
V194 (14 x 40)



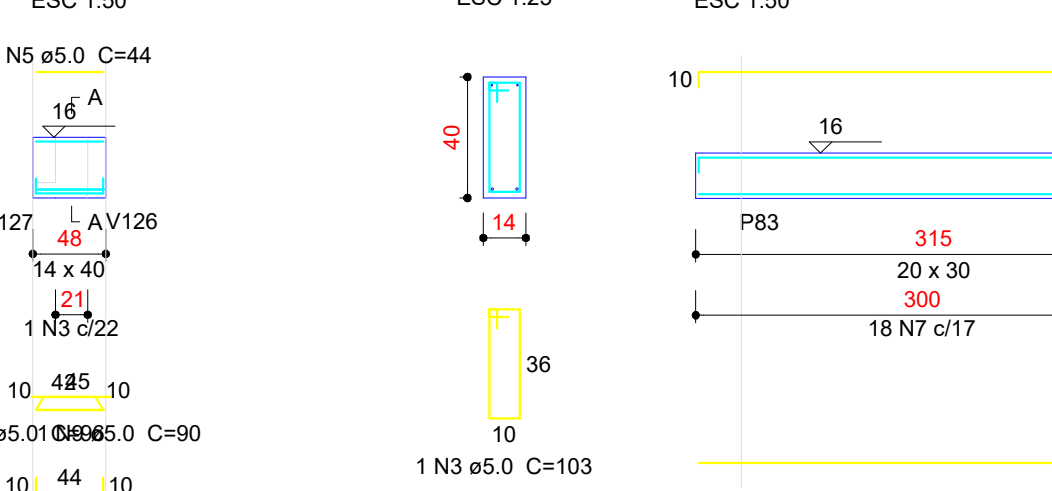
V195 (12 x 40)



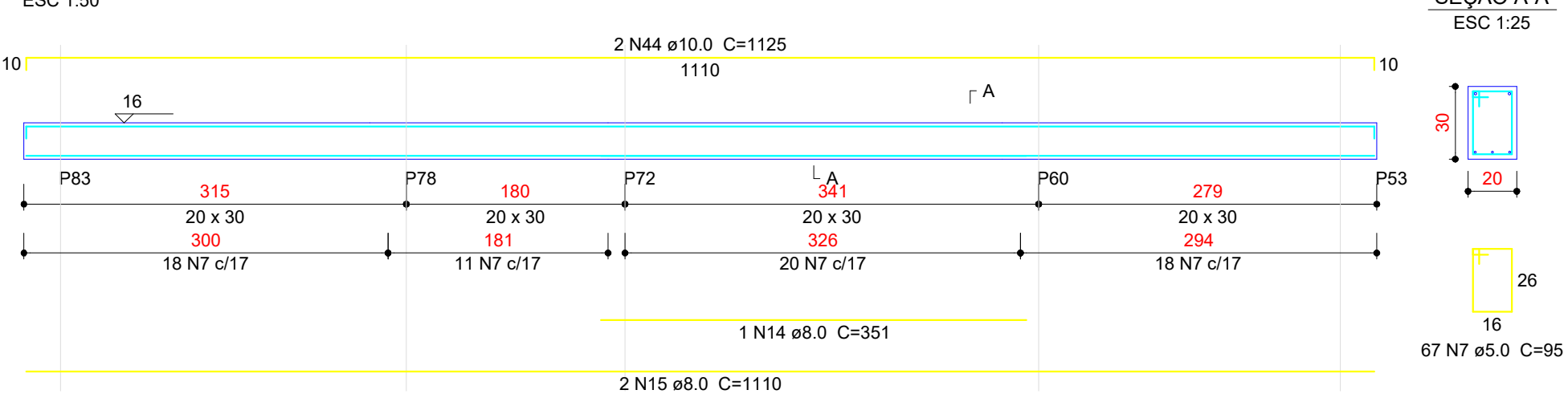
V196 (20 x 30)



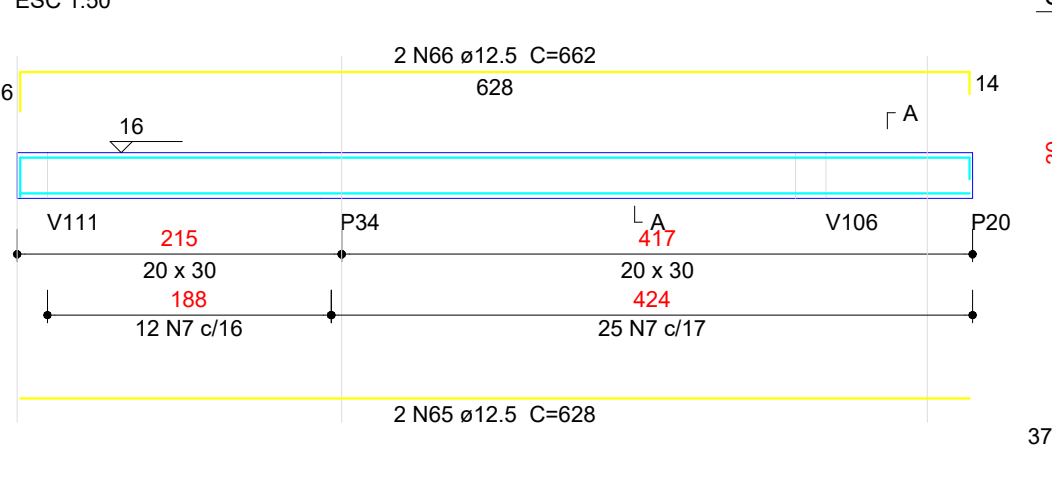
V197 (14 x 40)



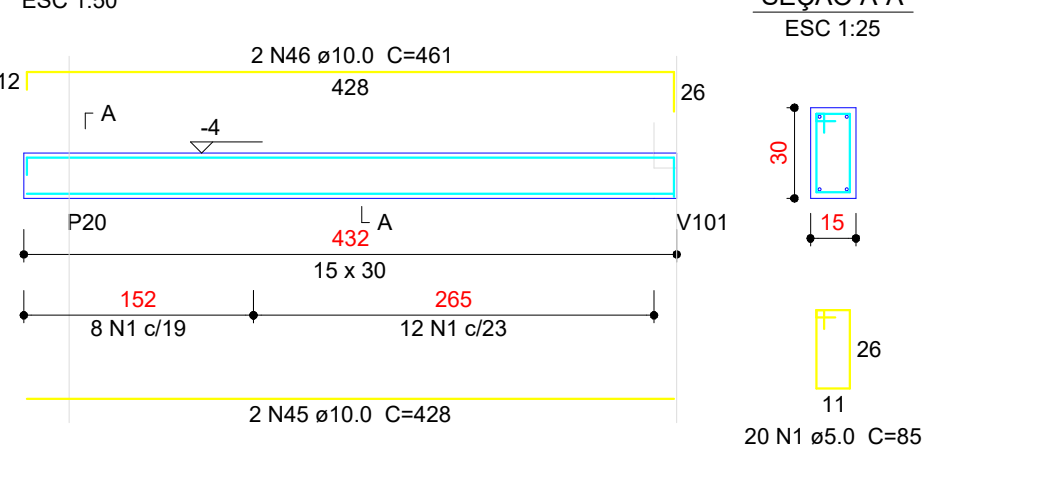
V198 (20 x 30)



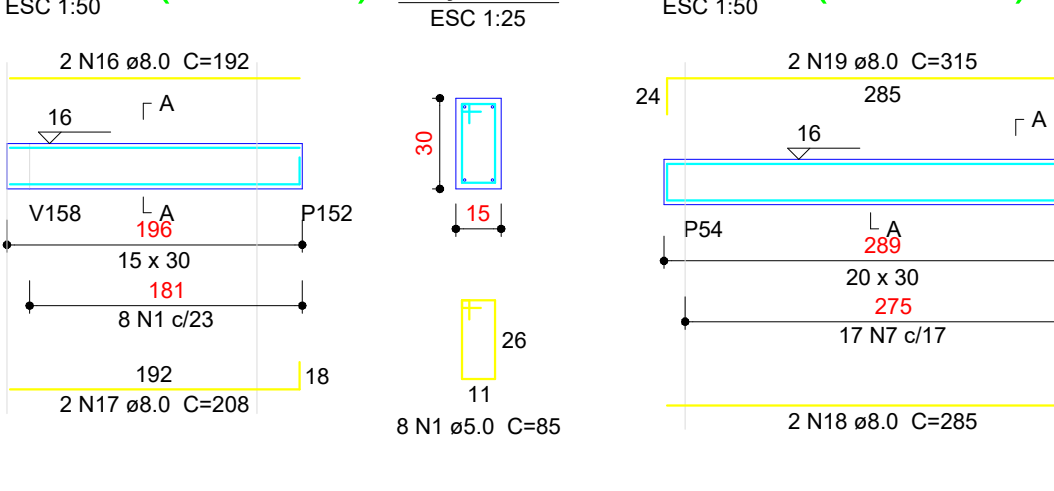
V199 (20 x 30)



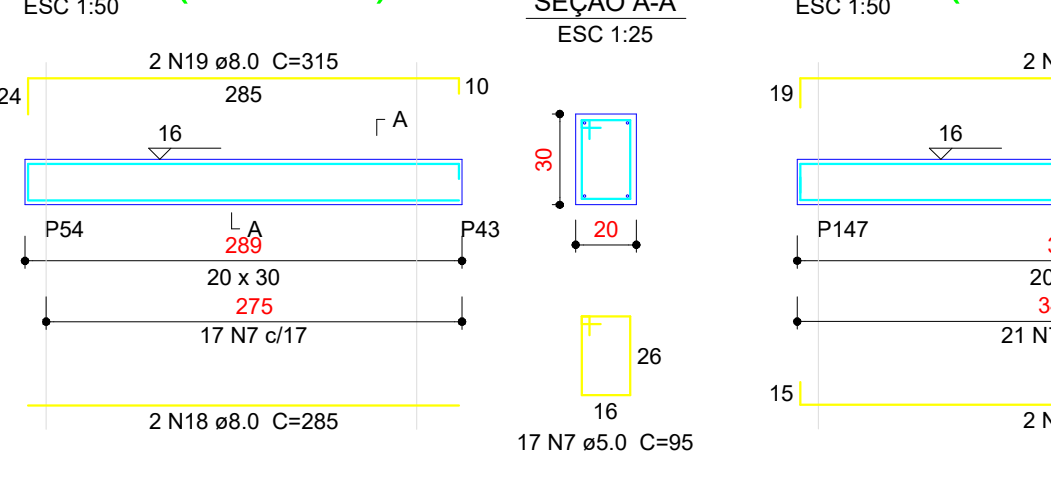
V200 (15 x 30)



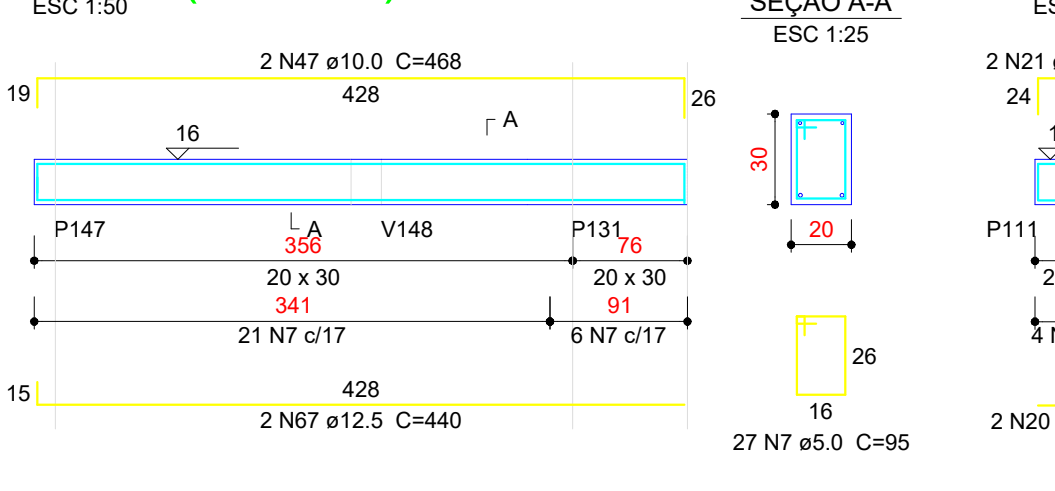
V201 (15 x 30)



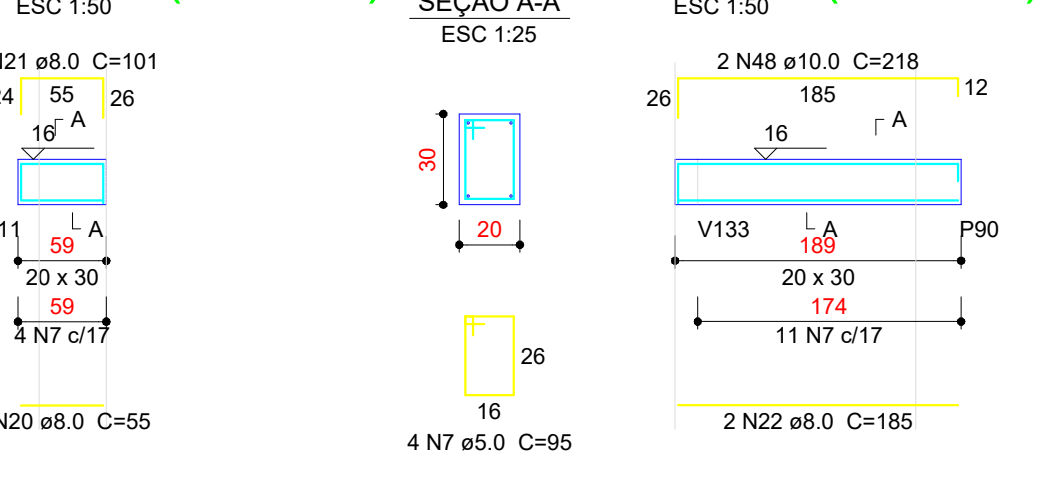
V202 (20 x 30)



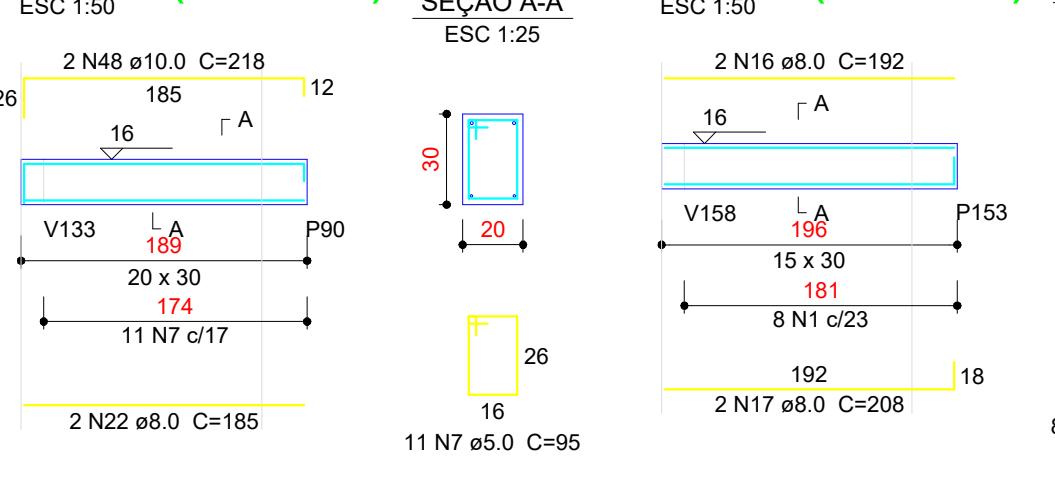
V203 (20 x 30)



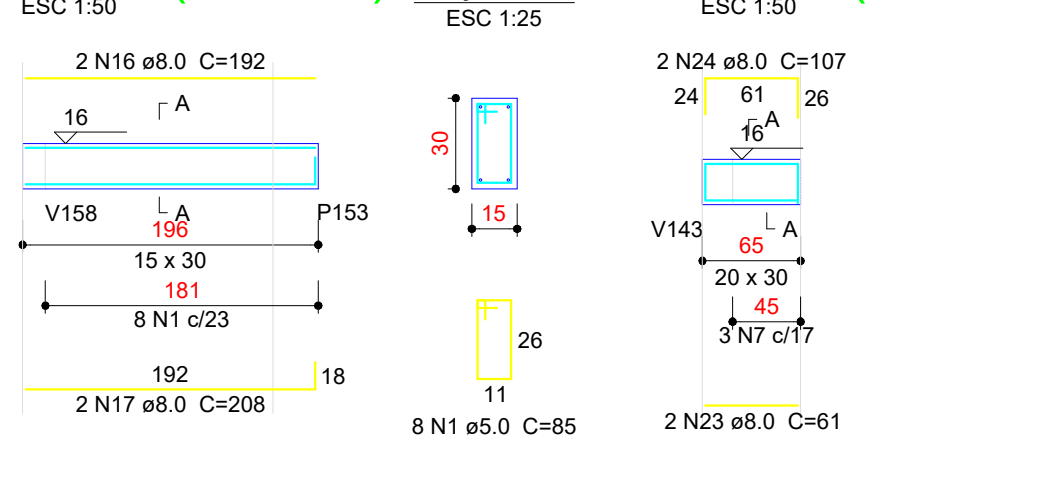
V204 (20 x 30)



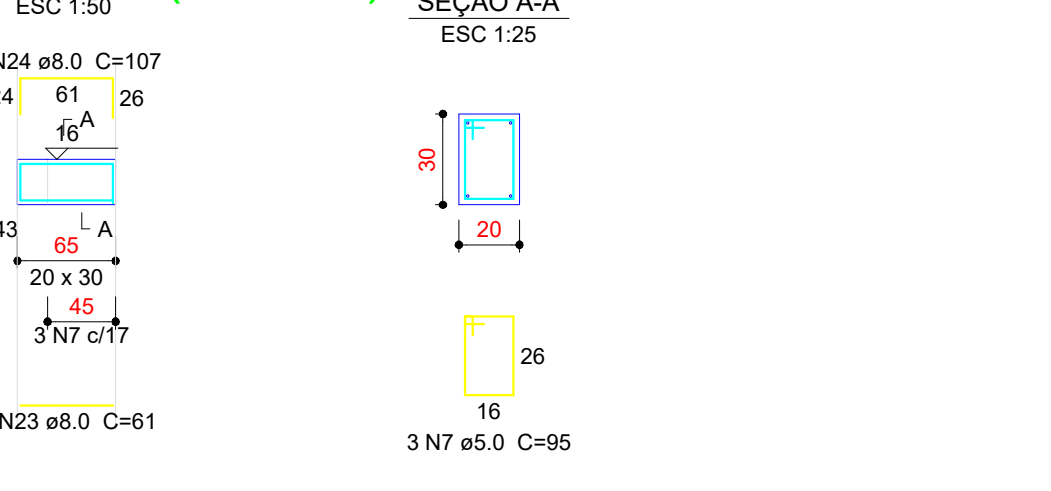
V205 (20 x 30)



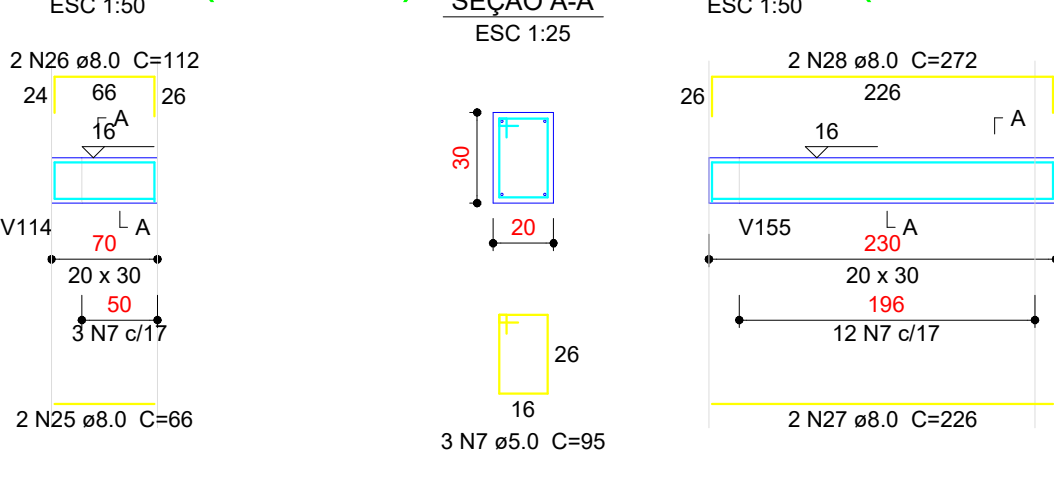
V206 (15 x 30)



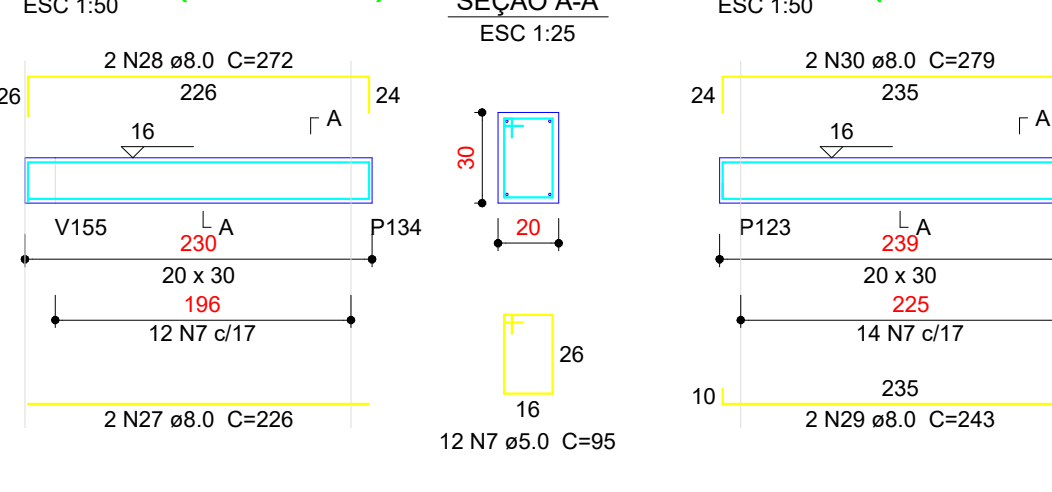
V207 (20 x 30)



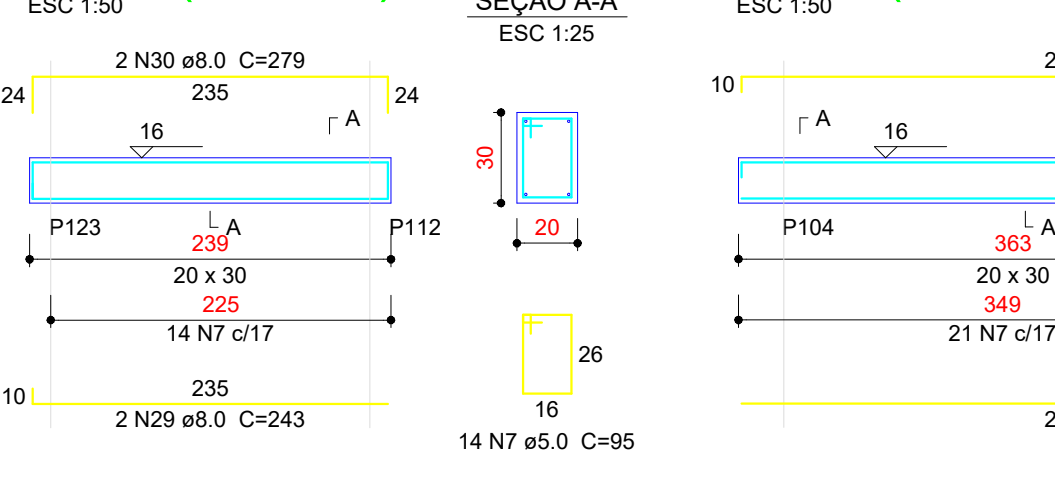
V208 (20 x 30)



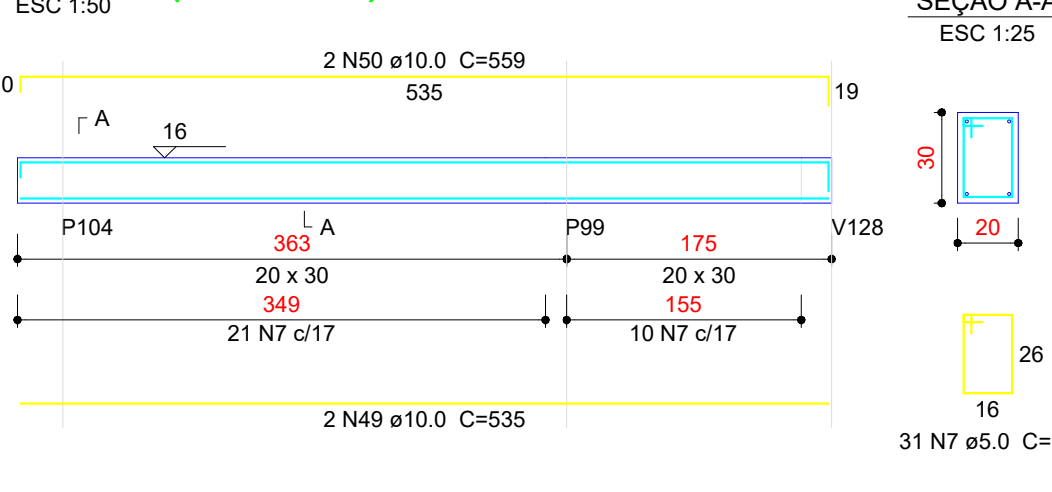
V209 (20 x 30)



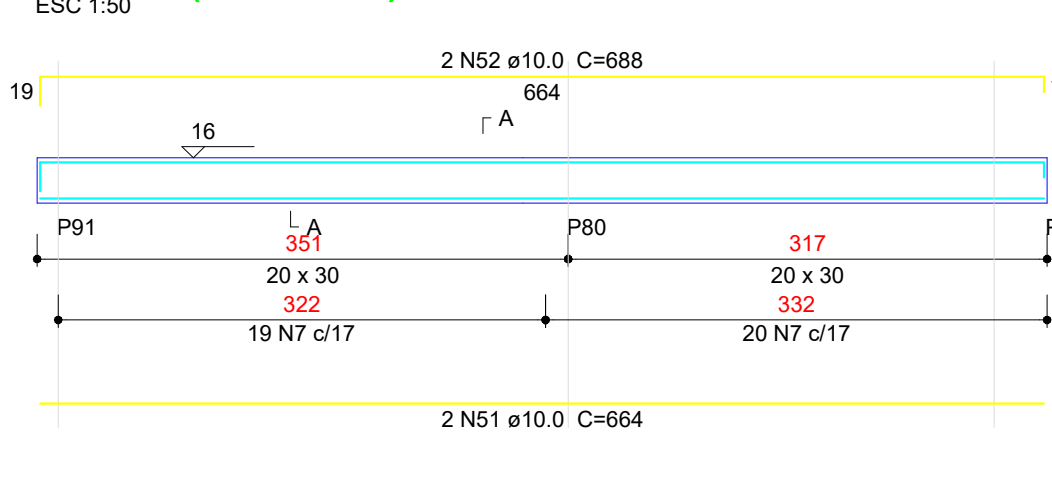
V210 (20 x 30)



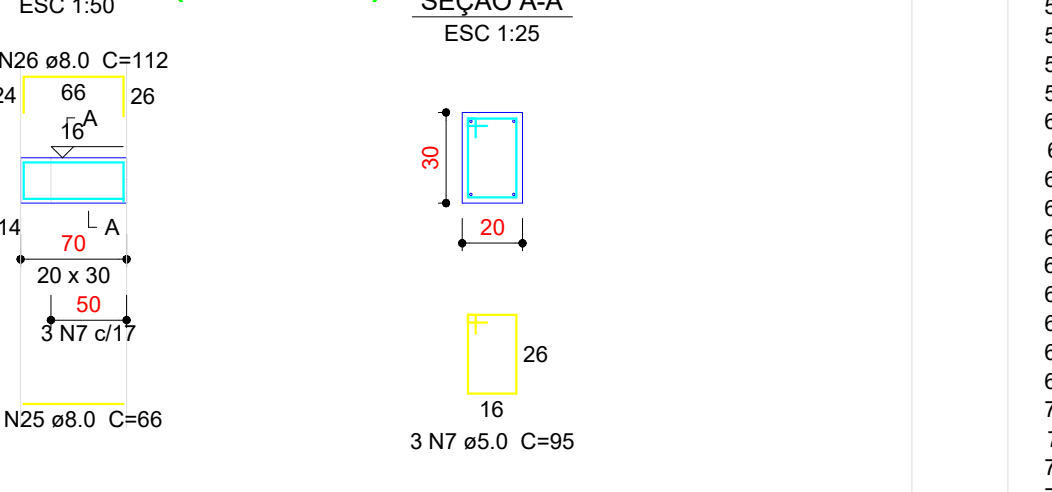
V211 (20 x 30)



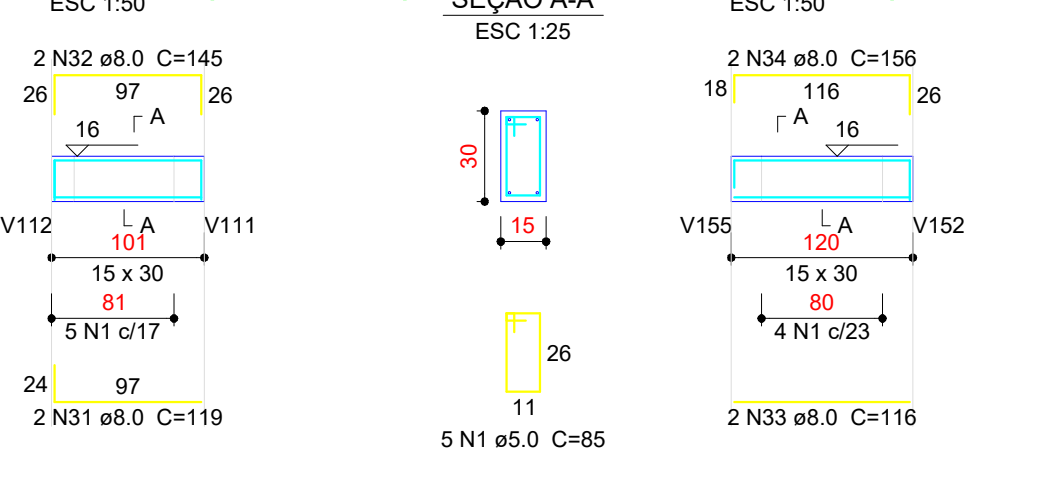
V212 (20 x 30)



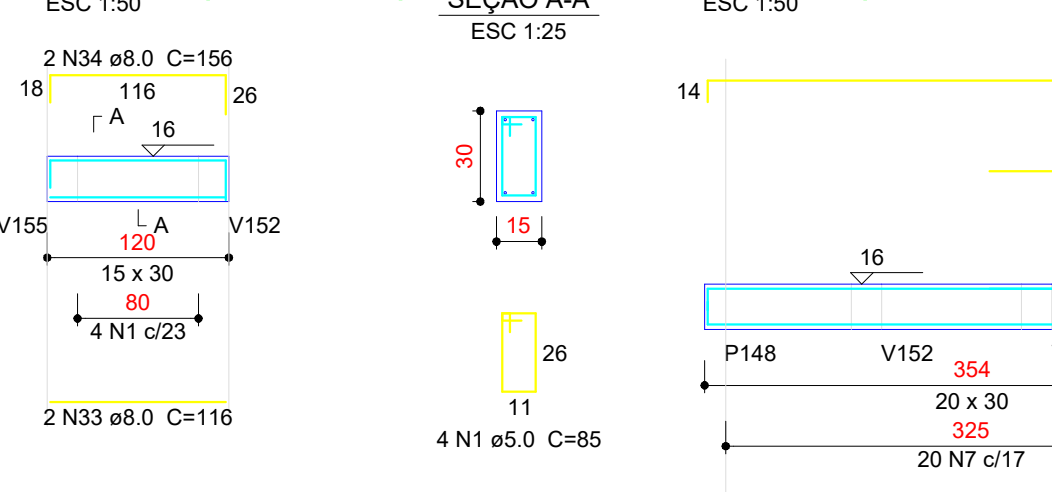
V213 (20 x 30)



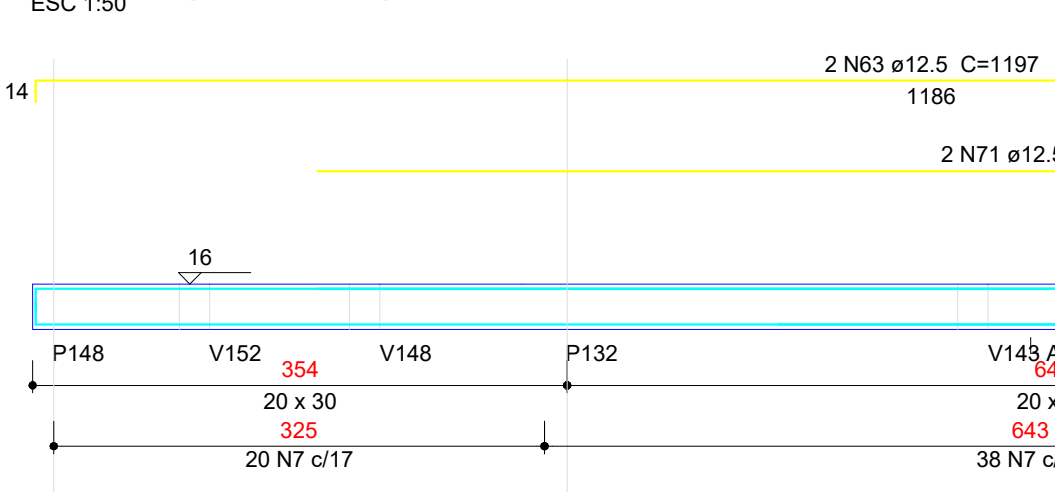
V214 (15 x 30)



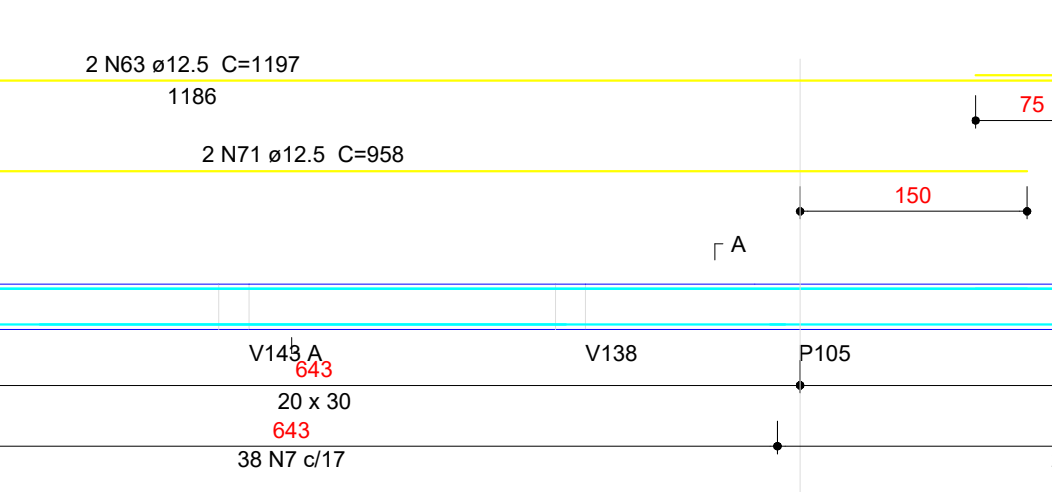
V215 (15 x 30)



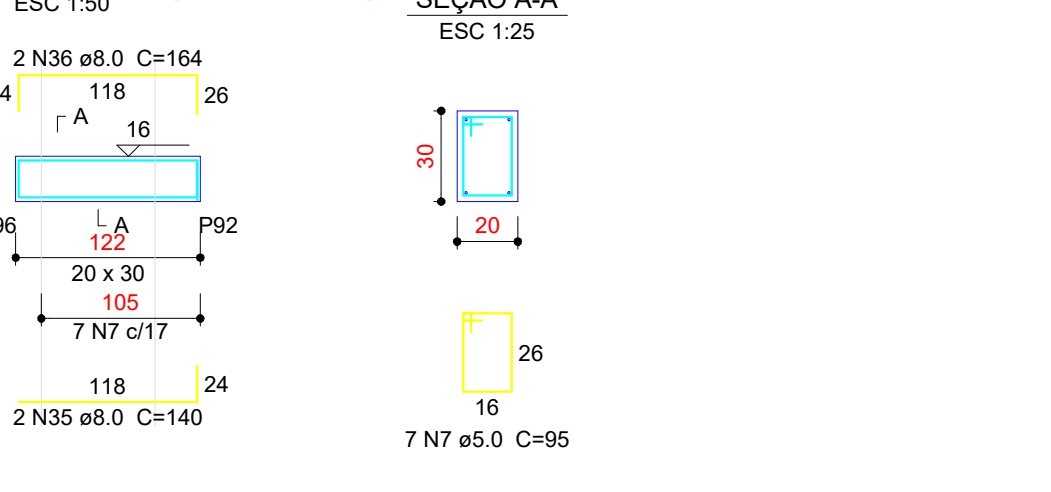
V216 (20 x 30)



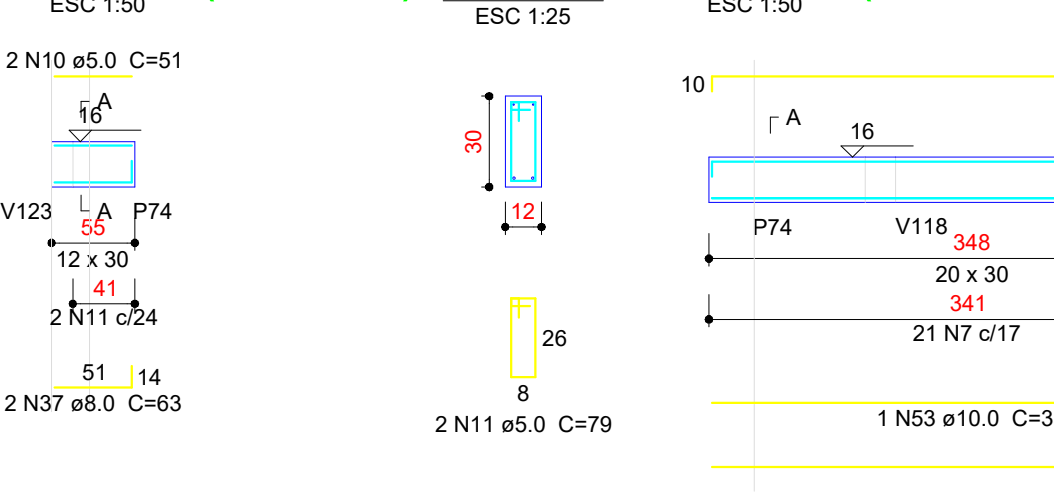
V217 (20 x 30)



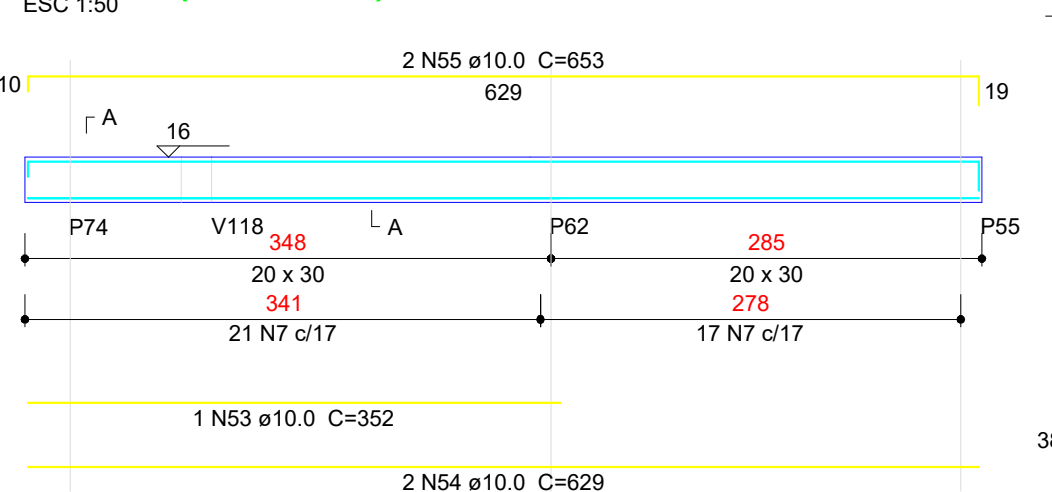
V218 (20 x 30)



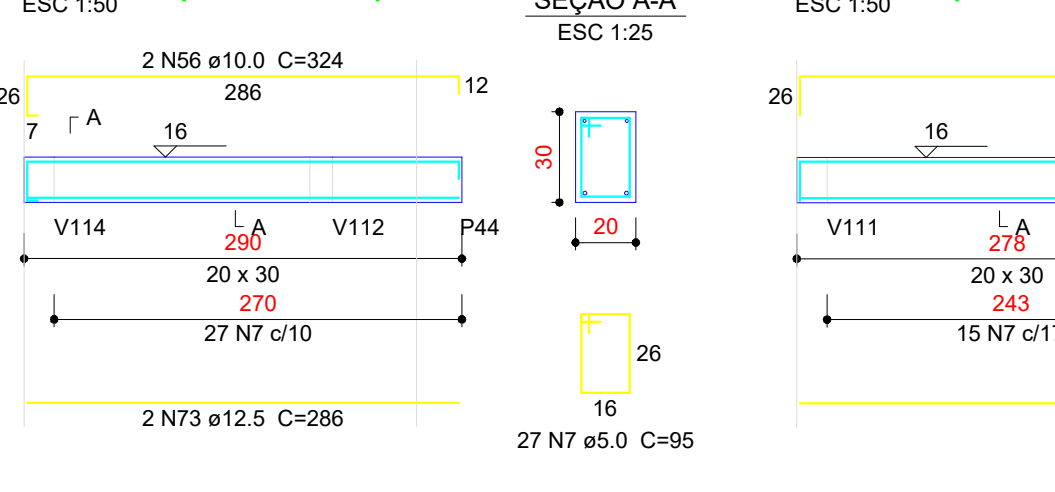
V219 (12 x 30)



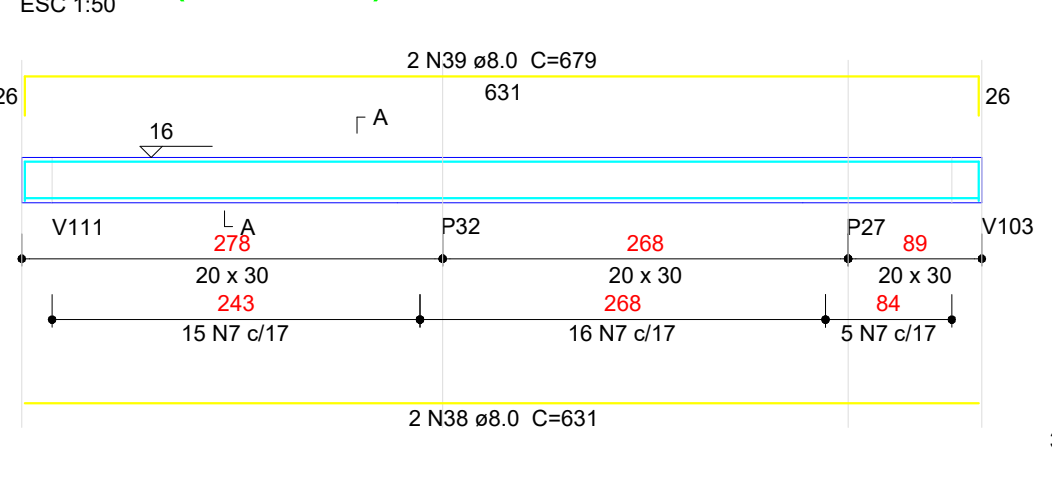
V220 (20 x 30)



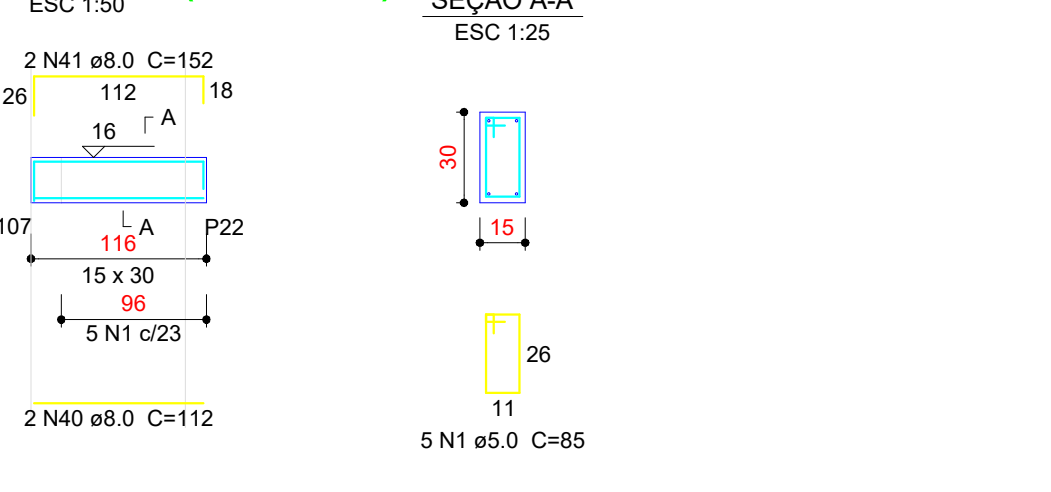
V221 (20 x 30)



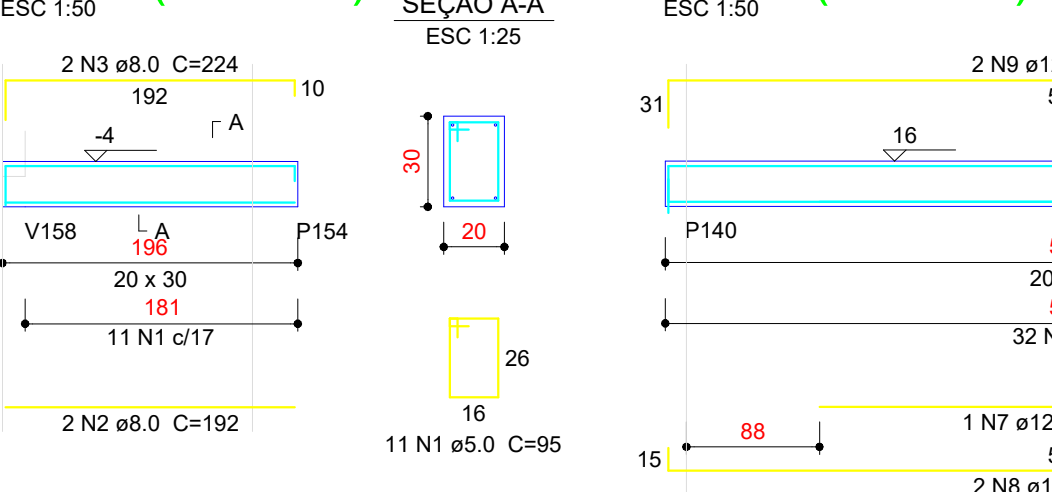
V222 (15 x 30)



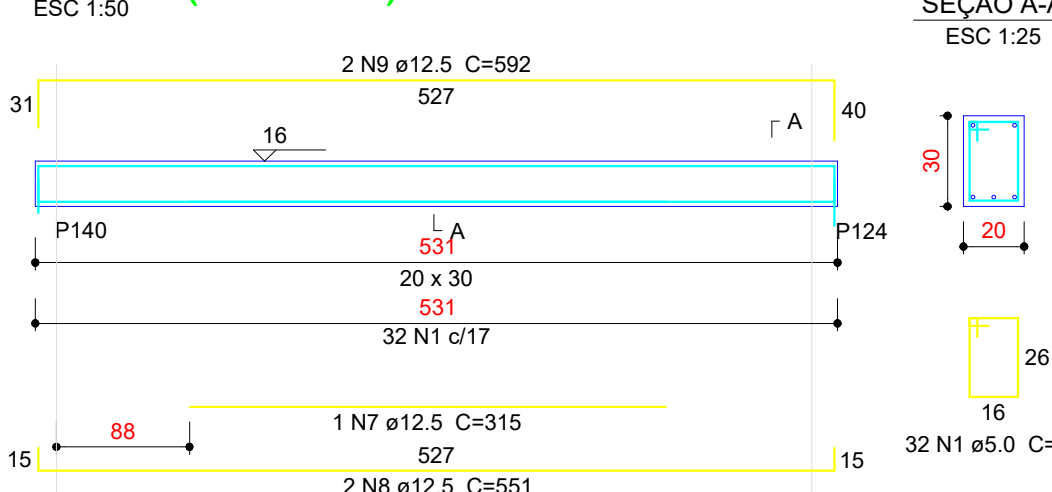
V223 (20 x 30)



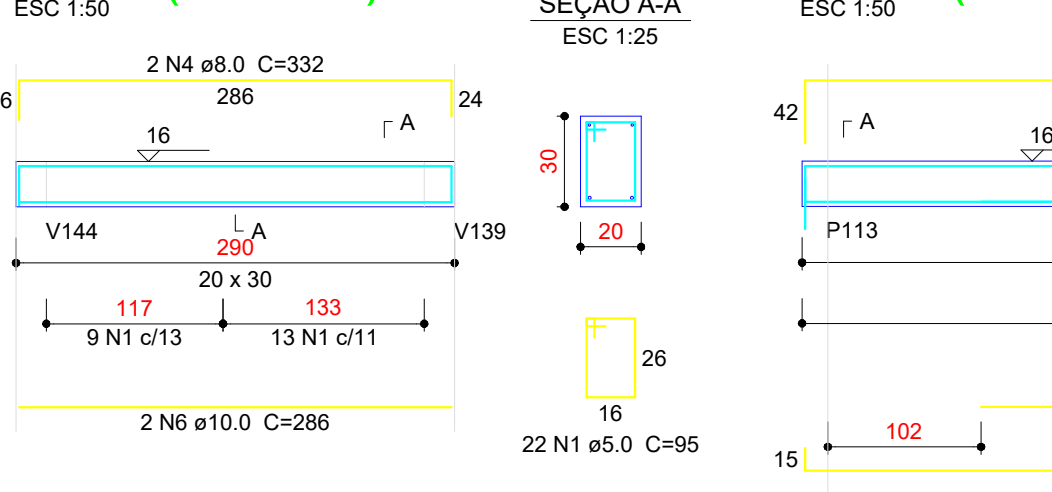
V224 (20 x 30)



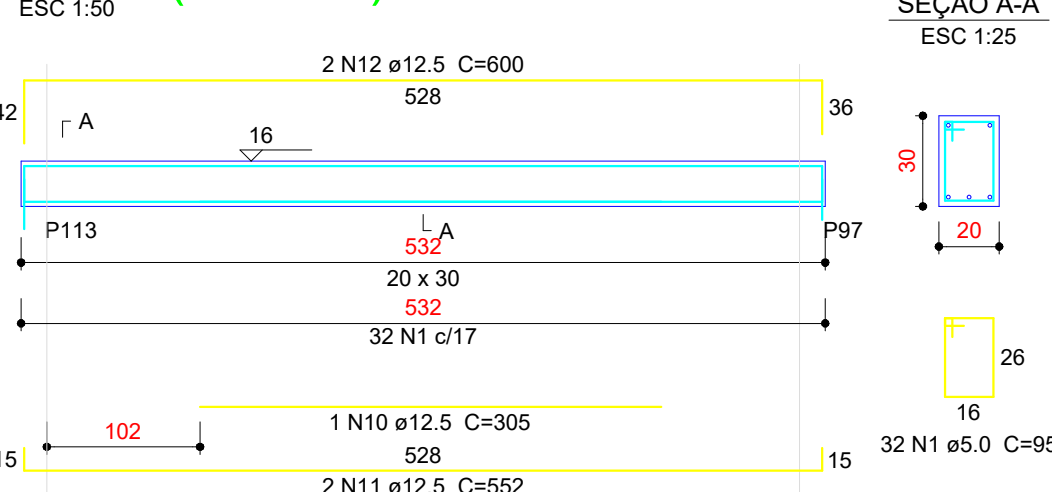
V225 (20 x 30)



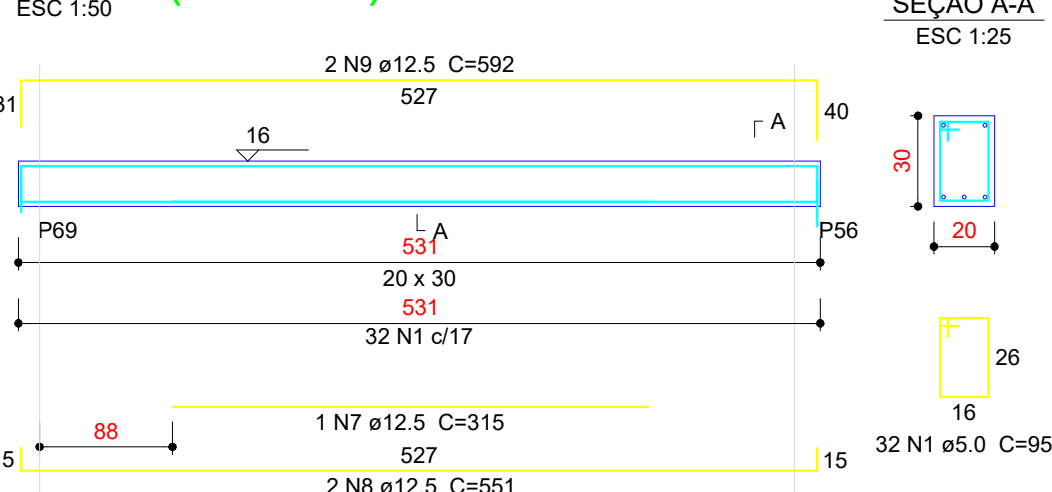
V226 (20 x 30)



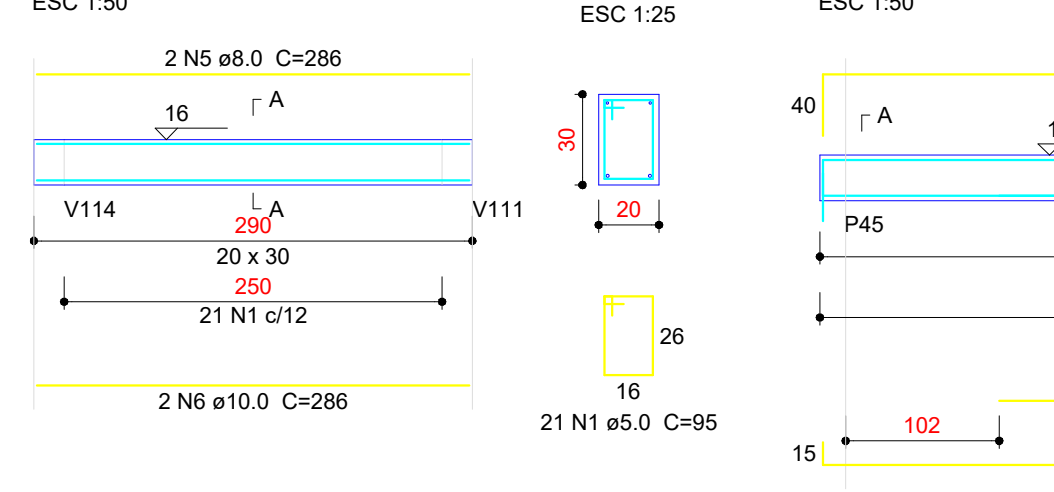
V227 (20 x 30)



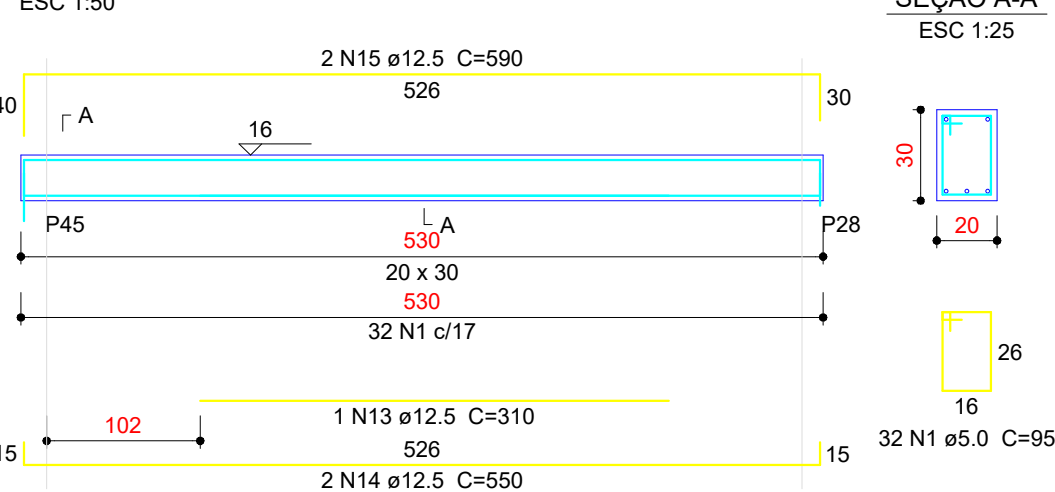
V228 (20 x 30)



V229 (20 x 30)



V230 (20 x 30)



V231 (20 x 30)



Relação do aço

ACO	N	DIAM (mm)	QUANT	C.UNIT (cm)	C.TOTAL (cm)
CA50	1	8.0	73	85	6205
	2	5.0	4	88	352
	3	5.0	3	103	309
	4	5.0	1	88	88
	5	5.0	4	44	176
	6	5.0	1	89	89
	7	5.0	561	95	53295
	8	5.0	1	96	96
	9	5.0	1	90	90
	10	5.0	2	51	102
	11	5.0	2	79	158
	12	8.0	2	52	104
	13	8.0	2	60	120
	14	8.0	1	351	351
	15	8.0	2	1110	2220
	16	8.0	4	192	768
	17	8.0	4	208	832
	18	8.0	2	285	570
	19	8.0	2	315	630
	20	8.0	2	55	110
	21	8.0	2	101	202
	22	8.0	2	185	370
	23	8.0	2	61	122
	24	8.0	2	107	214
	25	8.0	4	66	264
	26	8.0	4	112	448
	27	8.0	2	226	452
	28	8.0	2	272	544
	29	8.0	2	243	486
	30	8.0	2	279	558
	31	8.0	2	119	238
	32	8.0	2	145	290
	33	8.0	2	116	232
	34	8.0	2	156	312
	35	8.0	2	140	280
	36	8.0	2	164	328
	37	8.0	2	63	126
	38	8.0	2	631	1262
	39	8.0	2	679	1358
	40	8.0	2	112	224
	41	8.0	2	152	304
	42	10.0	2	59	118
	43	10.0	2	62	124
	44	10.0	2	1125	2250
	45	10.0	2	428	856
	46	10.0	2	451	902
	47	10.0	2	468	936
	48	10.0	2	218	436
	49	10.0	2	535	1070
	50	10.0	2	559	1118
	51	10.0	2	664	1328
	52	10.0	2	688	1376
	53	10.0	1	352	352
	54	10.0	2	629	1258
	55	10.0	2	653	1306
	56	10.0	2	324	648
	57	12.5	3	552	1656
	58	12.5	3	560	1700
	59	12.5	2	847	1694
	60	12.5	2	396	792
	61	12.5	2	883	1766
	62	12.5	1	295	295
	63	12.5	4	1197	4788
	64	12.5	2	646	1292
	65	12.5	2	628	1256
	66	12.5	2	662	1324
	67	12.5	2	440	880
	68	12.5	1	348	348
	69	12.5	2	997	1994
	70	12.5	2	449	898
	71	12.5	2	958	1916
	72	12.5	2	324	648
	73	12.5	2	286	572

Resumo do aço

ACO	DIAM (mm)	C.TOTAL (m)	QUANT (Barras)	PESO (kg)
CA50	8.0	143.2	12	56.5
	10.0	141.6	12	87.3
	12.5	238.9	20	230.1
CA60	8.0	609.7	51	94
PESO TOTAL (kg)				
CA50				373.9
CA60				94

Volume de concreto (C-30) = 6.09 m³
Área de forma = 63.86 m²

03	JANEIRO/2025	Revisão geral da disciplina conforme a atualização da arquitetura. Reatualização dos elementos estruturais e acústico de elementos para adequação da arquitetura. Atendimento a NBR 6118/2014 e NBR 6122/2016.
02	JANEIRO/2017	Atendimento a NBR 9050/2015. Alteração: quadro de áreas, sanitários infantis 1 e 2, altura da plataforma, mobiliário e equipamento, altura da centralização sanitários, cor dos portões dos sanitários e altura da porta P44. Acrescimento das duchas higiênicas e escaninhos pré-escola. Retirada da chapa de aço abaixo da plataforma.
01	AGOSTO/2016	Alteração paredes - shaft para tubulação hidráulica e detalhamento; alteração da altura da plataforma. Correção: Blocos: B34, B36, Placas: P33, P45, P57; Vigas nível 310: V22, V56, V75. Supressão: Viga nível 310: V72.
N°	DATA	DESCRIÇÃO

CONTROLE DE REVISÕES



PROJETO PADRÃO - FNDCE

PROPRIETÁRIO: MUNICÍPIO DE IBIRITÉ - CNPJ 16.715.490/0001-78 - Representante: DINIS PINHEIRO
ENDEREÇO: RUA ALCEGANDA, Nº450 - JARDIM
MUNICÍPIO - UF: IBIRITÉ/MG

PROPRIETÁRIO:
RESP. TÉCNICO: CAU / CREA
AUTOR DO PROJETO: CAU / CREA

APROVAÇÕES: CAU / CREA

PREFEITURA MUNICIPAL DE IBIRITÉ
SECRETARIA DE URBANISMO E PLANEJAMENTO

OBSERVAÇÕES:

COORDENAÇÃO: ESTRUCTURA DE CONCRETO
DETALHAMENTO VIGAS BALDRAME